

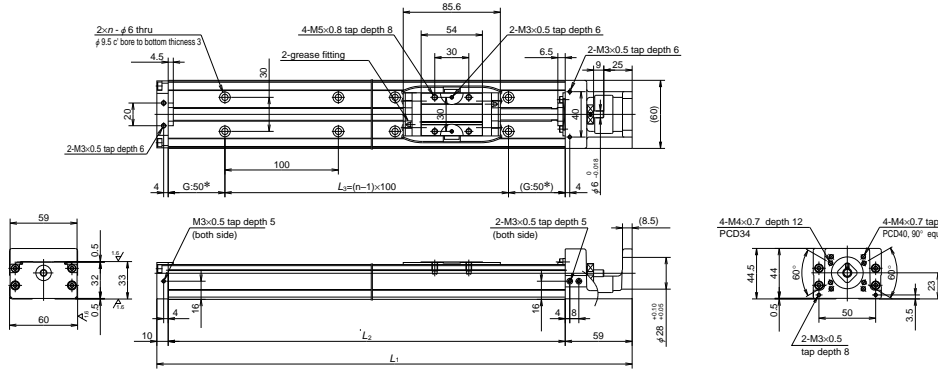


1	MCH Series Reference Number Coding	C63
2	MCH Series Dimension Table of Standard Products	
	MCL06	C64
	MCH06	C65
	MCH09	C67
	MCH10	C69
3	MCH Series Option Part	
3.1	Sensor Unit	C71
3.2	Cover Unit	C73
3.3	Intermediate Plate For Motor	C77

MCH Series

MCH06

Accuracy grade: High grade (H)



Dimension of MCH06 (Single slider)

Reference number	Nominal stroke (mm)	Stroke limit(mm) (K1 is not equipped)	Ball screw lead (mm)	Body length (mm)				Inertia x 10 ⁶ (kg · m ²)	Mass (kg)
				L ₁	L ₂	L ₃	n		
※ MCH06005H05K	50	53 (65)	5	219	150	100	2	2.38	1.8
※ MCH06005H10K			10					3.45	
☆ MCH06005H20K			20					7.25	
MCH06010H05K	100	103 (115)	5	269	200	100	2	3.17	2.2
MCH06010H10K			10					4.12	
MCH06010H20K			20					7.92	
MCH06020H05K	200	203 (215)	5	369	300	200	3	4.51	3.0
MCH06020H10K			10					5.46	
MCH06020H20K			20					9.26	
MCH06030H05K	300	303 (315)	5	469	400	300	4	5.85	3.7
MCH06030H10K			10					6.80	
MCH06030H20K			20					10.6	
MCH06040H05K	400	403 (415)	5	569	500	400	5	7.18	4.5
MCH06040H10K			10					8.13	
MCH06040H20K			20					11.9	
MCH06050H05K	500	503 (515)	5	669	600	500	6	8.52	5.2
MCH06050H10K			10					9.47	
MCH06050H20K			20					13.3	

Notes: 1. Items not marked are available from standard stock.
 2. Items marked with ☆ are designated as "quick delivery item" upon request.
 3. Dimension of G is 25 instead of 50 for those marked with ※.

Monocarrier dynamic torque specification (N · cm)

Ball screw lead (mm)	5	
	1.0 - 4.8	1.1 - 5.8
	1.6 - 7.9	

Notes:
 1. Frictional resistance of NSK K1 is included in the dynamic torque in the table.
 2. Grease is packed into ball screw, linear guide parts and support unit.
 3. Consult NSK for life estimates under large moment loads.

Basic load rating

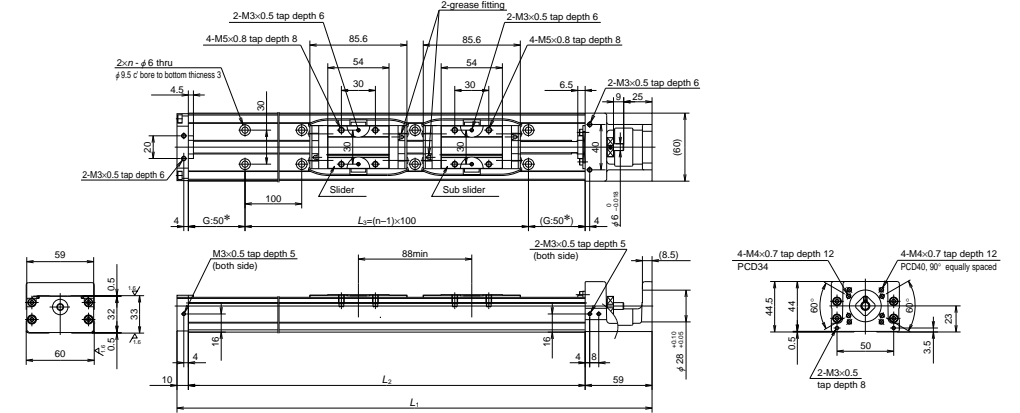
Lead ℓ (mm)	Shaft dia d (mm)	Basic dynamic load rating (N)				Basic static load rating (N)		Support unit load limit (N)
		Ball screw C _a	Linear guides C	Support unit C _a	Rated running distance L _a (km)	Ball screw C _{0a}	Linear guides C ₀	
5	φ 12	3000 (High grade)	22800	4400	5	5410 (High grade)	16300	1450
		3760 (Precision)				6310 (Precision)		
10	φ 12	1930 (High grade)	18100	4400	10	3160 (High grade)	16300	1450
		2260 (Precision)				3780 (Precision)		
20	φ 12	1930 (High grade)	14400	4400	20	3160 (High grade)	16300	1450
		2260 (Precision)				3780 (Precision)		

Basic static moment load of linear guide

Slider	Basic static moment load (N · m)		
	Rolling M _{RO}	Pitching M _{PO}	Yawing M _{VO}
Single	335	133	133

MCH06 (Double slider)

Accuracy grade: High grade (H)



Dimension of MCH06 (Double slider)

Reference number	Nominal stroke (mm)	Stroke limit(mm) (K1 is not equipped)	Ball screw lead (mm)	Body length (mm)				Inertia x 10 ⁶ (kg · m ²)	Mass (kg)
				L ₁	L ₂	L ₃	n		
☆ MCH06010H05D	100	115 (139)	5	369	300	200	3	4.82	3.5
☆ MCH06010H10D			10					6.72	
☆ MCH06020H05D	200	215 (239)	5	469	400	300	4	8.06	4.2
☆ MCH06020H10D			10					15.7	
☆ MCH06030H05D	300	315 (339)	5	569	500	400	5	9.40	5.0
☆ MCH06030H10D			10					17.0	
☆ MCH06040H10D	400	415 (439)	10	669	600	500	6	10.7	5.7
☆ MCH06040H20D			20					18.3	

Notes: 1. Items not marked are available from standard stock.
 2. Items marked with ☆ are designated as "quick delivery item" upon request.

Monocarrier dynamic torque specification (N · cm)

Ball screw lead (mm)	5	
	1.2 - 5.2	1.5 - 9.6
	2.3 - 11.8	

Notes:
 1. Frictional resistance of NSK K1 is included in the dynamic torque in the table.
 2. Grease is packed into ball screw, linear guide parts and support unit.
 3. Consult NSK for life estimates under large moment loads.

Basic load rating

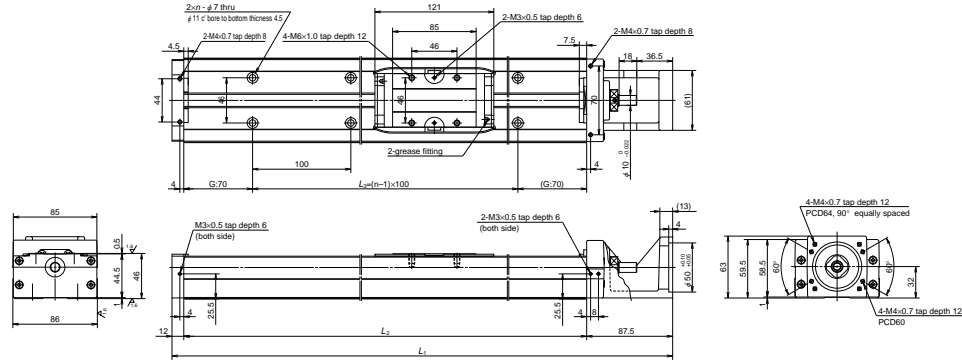
Lead ℓ (mm)	Shaft dia d (mm)	Basic dynamic load rating (N)				Basic static load rating (N)		Support unit load limit (N)
		Ball screw C _a	Linear guides C	Support unit C _a	Rated running distance L _a (km)	Ball screw C _{0a}	Linear guides C ₀	
5	φ 12	3000 (High grade)	22800	4400	5	5410 (High grade)	16300	1450
		3760 (Precision)				6310 (Precision)		
10	φ 12	1930 (High grade)	18100	4400	10	3160 (High grade)	16300	1450
		2260 (Precision)				3780 (Precision)		
20	φ 12	1930 (High grade)	14400	4400	20	3160 (High grade)	16300	1450
		2260 (Precision)				3780 (Precision)		

Basic static moment load of linear guide

Slider	Basic static moment load (N · m)		
	Rolling M _{RO}	Pitching M _{PO}	Yawing M _{VO}
Double	770	730	730

MCH09

Accuracy grade: High grade (H)



Dimension of MCH09 (Single slider)

Reference number	Nominal stroke (mm)	Stroke limit (mm) (K1 is not equipped)	Ball screw lead (mm)	Body length (mm)				Inertia $\times 10^{-6}(\text{kg} \cdot \text{m}^2)$	Mass (kg)
				L ₁	L ₂	L ₃	n		
☆MCH09010H05K	100	107 (121)	5	339.5	240	100	2	9.2	5.0
☆MCH09010H10K			10					10.7	
☆MCH09010H20K			20					16.8	
MCH09020H05K	200	207 (221)	5	439.5	340	200	3	12.4	6.5
MCH09020H10K			10					13.9	
☆MCH09020H20K			20					20.0	
MCH09030H05K	300	307 (321)	5	539.5	440	300	4	15.6	8.1
MCH09030H10K			10					17.1	
☆MCH09030H20K			20					23.2	
MCH09040H05K	400	407 (421)	5	639.5	540	400	5	18.8	9.7
MCH09040H10K			10					20.3	
☆MCH09040H20K			20					26.4	
☆MCH09050H05K	500	507 (521)	5	739.5	640	500	6	22.0	11
MCH09050H10K			10					23.5	
MCH09050H20K			20					29.6	
☆MCH09060H05K	600	607 (621)	5	839.5	740	600	7	25.2	13
MCH09060H10K			10					26.7	
MCH09060H20K			20					32.8	
☆MCH09070H05K	700	707 (721)	5	939.5	840	700	8	28.4	14.5
☆MCH09070H10K			10					30.0	
☆MCH09070H20K			20					36.0	
☆MCH09080H05K	800	807 (821)	5	1 039.5	940	800	9	31.6	16
MCH09080H10K			10					33.2	
MCH09080H20K			20					39.2	

Notes: 1. Items not marked are available from standard stock.
2. Items marked with ☆ are designated as "quick delivery item" upon request.

Monocarrier dynamic torque specification (N · cm)

Ball screw lead (mm)	5	
	1.0 – 5.9	2.0 – 7.8
	2.0 – 10.8	

Notes:
1. Frictional resistance of NSK K1 is included in the dynamic torque in the table.
2. Grease is packed into ball screw, linear guide parts and support unit.
3. Consult NSK for life estimates under large moment loads.

Basic load rating

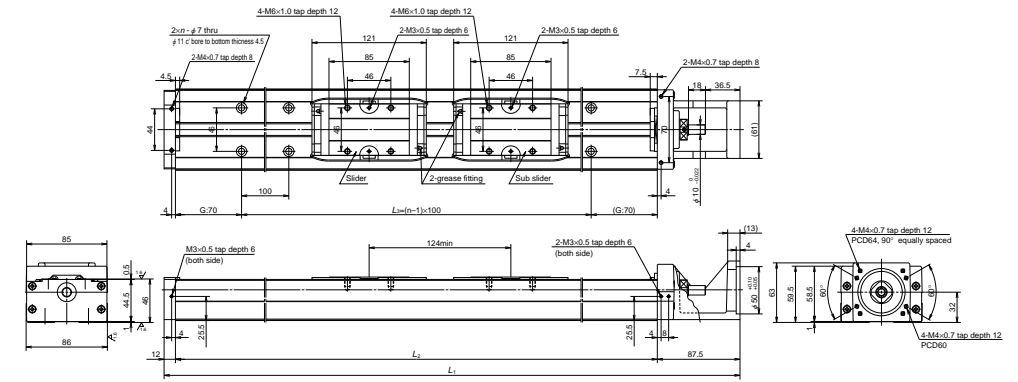
Lead ℓ (mm)	Shaft dia d (mm)	Basic dynamic load rating (N)				Basic static load rating (N)		Support unit load limit (N)
		Ball screw C_a	Linear guides C	Support unit C_a	Rated running distance L_a (km)	Ball screw C_{0a}	Linear guides C_0	
5	$\phi 15$	6820 (High grade)	40600	7100	5	13200 (High grade)	30500	3040
		7100 (Precision)				13000 (Precision)		
10	$\phi 15$	5110 (High grade)	32200	7100	10	9290 (High grade)	30500	3040
		7060 (Precision)				12700 (Precision)		
20	$\phi 15$	3290 (High grade)	25500	7100	20	5620 (High grade)	30500	3040
		4560 (Precision)				7750 (Precision)		

Basic static moment load of linear guide

Slider	Basic static moment load (N · m)		
	Rolling M_{RO}	Pitching M_{PO}	Yawing M_{VO}
Single	890	385	385

MCH09 (Double slider)

Accuracy grade: High grade (H)



Dimension of MCH09 (Double slider)

Reference number	Nominal stroke (mm)	Stroke limit (mm) (K1 is not equipped)	Ball screw lead (mm)	Body length (mm)				Inertia $\times 10^{-6}(\text{kg} \cdot \text{m}^2)$	Mass (kg)
				L ₁	L ₂	L ₃	n		
☆MCH09015H05D	150	183 (211)	5	539.5	440	300	4	16.1	8.9
☆MCH09015H10D			10					19.2	
☆MCH09025H05D	250	283 (311)	5	639.5	540	400	5	19.3	11
☆MCH09025H10D			10					22.4	
☆MCH09035H05D	350	383 (411)	5	739.5	640	500	6	22.5	12
☆MCH09035H10D			10					25.6	
☆MCH09045H10D	450	483 (511)	10	839.5	740	600	7	28.8	14
☆MCH09045H20D			20					40.9	
☆MCH09065H10D	650	683 (711)	10	1 039.5	940	800	9	35.2	17
☆MCH09065H20D			20					47.3	

Notes: 1. Items not marked are available from standard stock.
2. Items marked with ☆ are designated as "quick delivery item" upon request.

Monocarrier dynamic torque specification (N · cm)

Ball screw lead (mm)	5	
	1.5 – 7.0	2.5 – 10.8
	4.0 – 17.2	

Notes:
1. Frictional resistance of NSK K1 is included in the dynamic torque in the table.
2. Grease is packed into ball screw, linear guide parts and support unit.
3. Consult NSK for life estimates under large moment loads.

Basic load rating

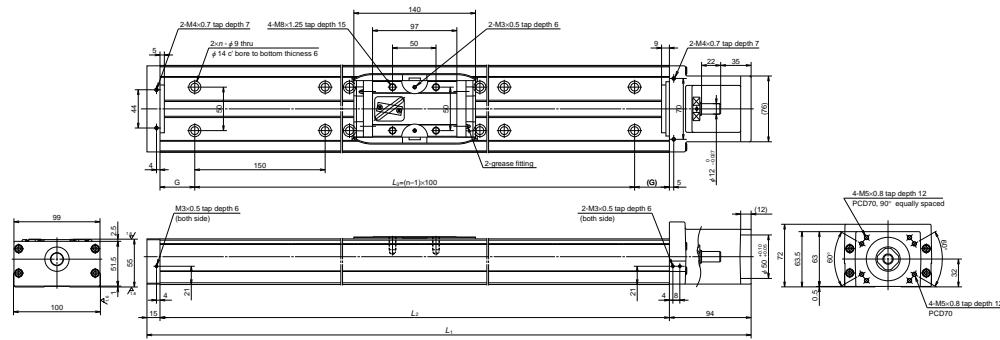
Lead ℓ (mm)	Shaft dia d (mm)	Basic dynamic load rating (N)				Basic static load rating (N)		Support unit load limit (N)
		Ball screw C_a	Linear guides C	Support unit C_a	Rated running distance L_a (km)	Ball screw C_{0a}	Linear guides C_0	
5	$\phi 15$	6820 (High grade)	40600	7100	5	13200 (High grade)	30500	3040
		7100 (Precision)				13000 (Precision)		
10	$\phi 15$	5110 (High grade)	32200	7100	10	9290 (High grade)	30500	3040
		7060 (Precision)				12700 (Precision)		
20	$\phi 15$	3290 (High grade)	25500	7100	20	5620 (High grade)	30500	3040
		4560 (Precision)				7750 (Precision)		

Basic static moment load of linear guide

Slider	Basic static moment load (N · m)		
	Rolling M_{RO}	Pitching M_{PO}	Yawing M_{VO}
Double	1780	2070	2070

MCH10

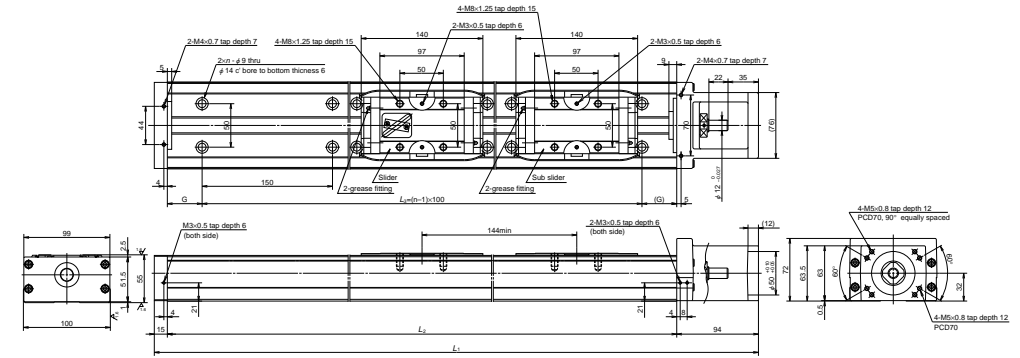
Accuracy grade: High grade (H)



MCH10

MCH10 (Double slider)

Accuracy grade: High grade (H)



Dimension of MCH10 (Single slider)

Reference number	Nominal stroke (mm)	Stroke limit (mm) (K1 is not equipped)	Ball screw lead (mm)	Body length (mm)					Inertia x 10 ⁻⁶ (kg · m ²)	Mass (kg)
				L ₁	L ₂	G	L ₃	n		
☆MCH10010H10K	100	126	10	389	280	65	150	2	33.2	7.3
☆MCH10010H20K		(142)	20						41.1	
☆MCH10020H10K	200	226	10	489	380	40	300	3	43.4	9.5
☆MCH10020H20K		(242)	20						51.3	
☆MCH10030H10K	300	326	10	589	480	15	450	4	53.7	12
☆MCH10030H20K		(342)	20						61.6	
MCH10040H10K	400	426	10	689	580	65	450	4	62.4	14
MCH10040H20K		(442)	20						71.8	
MCH10050H10K	500	526	10	789	680	40	600	5	74.7	16
MCH10050H20K		(542)	20						82.3	
MCH10060H10K	600	626	10	889	780	15	750	6	84.9	19
MCH10060H20K		(642)	20						92.5	
MCH10070H10K	700	726	10	989	880	65	750	6	95.1	21
MCH10070H20K		(742)	20						103	
MCH10080H10K	800	826	10	1 089	980	40	900	7	105	23
MCH10080H20K		(842)	20						113	
☆MCH10090H10K	900	926	10	1 189	1 080	15	1 050	8	116	25
☆MCH10090H20K		(942)	20						123	
☆MCH10100H10K	1 000	1 026	10	1 289	1 180	65	1 050	8	126	27
☆MCH10100H20K		(1 042)	20						133	
☆MCH10110H10K	1 100	1 126	10	1 389	1 280	40	1 200	9	136	29
☆MCH10110H20K		(1 142)	20						143	
☆MCH10120H10K	1 200	1 226	10	1 489	1 380	15	1 350	10	146	32
☆MCH10120H20K		(1 242)	20						154	

Notes: 1. Items not marked are available from standard stock.
2. Items marked with ☆ are designated as "quick delivery item" upon request.

Monocarrier dynamic torque specification (N · cm)

Ball screw lead (mm)	10	2.7 – 10.8
	20	3.1 – 12.7

Notes:

- Frictional resistance of NSK K1 is included in the dynamic torque in the table.
- Grease is packed into ball screw, linear guide parts and support unit.
- Consult NSK for life estimates under large moment loads.

Basic load rating

Lead (mm)	Shaft dia (mm)	Basic dynamic load rating (N)				Basic static load rating (N)		Support unit load limit (N)
		Ball screw C _a	Linear guides C	Support unit C _a	Rated running distance L _a (km)	Ball screw C _{0a}	Linear guides C ₀	
10	φ 20	8230 (High grade)	44600	7600	10	17100 (High grade)	42000	3380
		10900 (Precision)				21700 (Precision)		
20		5300 (High grade)			20	10300 (High grade)		
		7060 (Precision)				12700 (Precision)		

Basic static moment load of linear guide

Slider	Basic static moment load (N · m)		
	Rolling M _{RO}	Pitching M _{PO}	Yawing M _{VO}
Single	1460	610	610

Dimension of MCH10 (Double slider)

Reference number	Nominal stroke (mm)	Stroke limit (mm) (K1 is not equipped)	Ball screw lead (mm)	Body length (mm)					Inertia x 10 ⁻⁶ (kg · m ²)	Mass (kg)
				L ₁	L ₂	G	L ₃	n		
☆MCH10025H10D	250	282	10	689	580	65	450	4	67.1	15
☆MCH10025H20D		(314)	20						82.4	
☆MCH10035H10D	350	382	10	789	680	40	600	5	77.3	17
☆MCH10035H20D		(414)	20						92.5	
☆MCH10045H10D	450	482	10	889	780	15	750	6	87.5	20
☆MCH10045H20D		(514)	20						103	
☆MCH10055H10D	550	582	10	989	880	65	750	6	97.7	22
☆MCH10055H20D		(614)	20						113	
☆MCH10065H10D	650	682	10	1 089	980	40	900	7	108	24
☆MCH10065H20D		(714)	20						123	
☆MCH10075H20D	750	782(814)	20	1 189	1 080	15	1 050	8	133	26
☆MCH10085H20D	850	882(914)	20	1 289	1 180	65	1 050	8	143	28
☆MCH10095H20D	950	982(1 014)	20	1 389	1 280	40	1 200	9	154	30
☆MCH10105H20D	1 050	1 082(1 114)	20	1 489	1 380	15	1 350	10	164	33

Notes: 1. Items not marked are available from standard stock.
2. Items marked with ☆ are designated as "quick delivery item" upon request.

Monocarrier dynamic torque specification (N · cm)

Ball screw lead (mm)	10	4.2 – 15.6
	20	5.0 – 19.6

Notes:

- Frictional resistance of NSK K1 is included in the dynamic torque in the table.
- Grease is packed into ball screw, linear guide parts and support unit.
- Consult NSK for life estimates under large moment loads.

Basic load rating

Lead (mm)	Shaft dia (mm)	Basic dynamic load rating (N)				Basic static load rating (N)		Support unit load limit (N)
		Ball screw C _a	Linear guides C	Support unit C _a	Rated running distance L _a (km)	Ball screw C _{0a}	Linear guides C ₀	
10	φ 20	8230 (High grade)	44600	7600	10	17100 (High grade)	42000	3380
		10900 (Precision)				21700 (Precision)		
20		5300 (High grade)						
		7060 (Precision)				12700 (Precision)		

Basic static moment load of linear guide

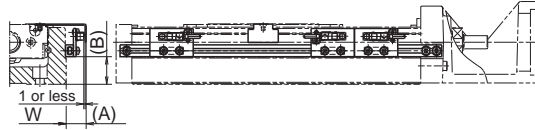
Slider	Basic static moment load (N · m)		
	Rolling M _{RO}	Pitching M _{PO}	Yawing M _{VO}
Double	2920	3430	3430

C-3-3 MCH Series Option Part

C-3-3. 1 Sensor Unit



● Proximity switch

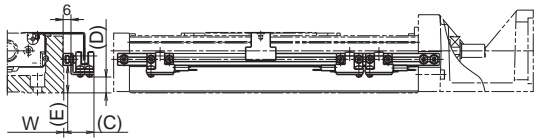


(Example of assembly)

Type	Reference number			Dimension(A) (mm)	Dimension(B) (mm)	Body width W (mm)
MCH06	MC-SRH06-10	MC-SRH06-11	MC-SRH06-12	17	10	60
MCH09	MC-SRH09-10	MC-SRH09-11	MC-SRH09-12	16	21	86
MCH10	MC-SRH10-10	MC-SRH10-11	MC-SRH10-12	16	16	100
Quantity	Proximity switch (a-contact)	—	3	1	E2S-W13 (OMRON Corp.)	
	Proximity switch (b-contact)	3	—	2	E2S-W14 (OMRON Corp.)	

Notes: 1. See page C21 for specification of proximity switch. 2. A sensor unit consists of sensors, a sensor dog and sensor mounting parts.

● Photo sensor



(Example of assembly)

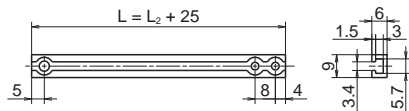
Type	Reference number	Dimension(C) (mm)	Dimension(D) (mm)	Dimension(E) (mm)	Body width W (mm)	Remarks
MCH06	MC-SRH06-13	24	2	11	60	EE-SX674 (OMRON Corp.) 3 sets (EE-1001 connector attachment)
MCH09	MC-SRH09-13	23	12	21	86	
MCH10	MC-SRH10-13	23	29	16	100	

Notes: 1. See page C22 for specification of photo sensor. 2. A sensor unit consists of sensors, a sensor dog and sensor mounting parts.

● Sensor rail

Reference number : MC-SRL- * * * *

● * * * * is the same as rail dimension L_2 .



Body of MCH Series and Sensor Rail Combination Table

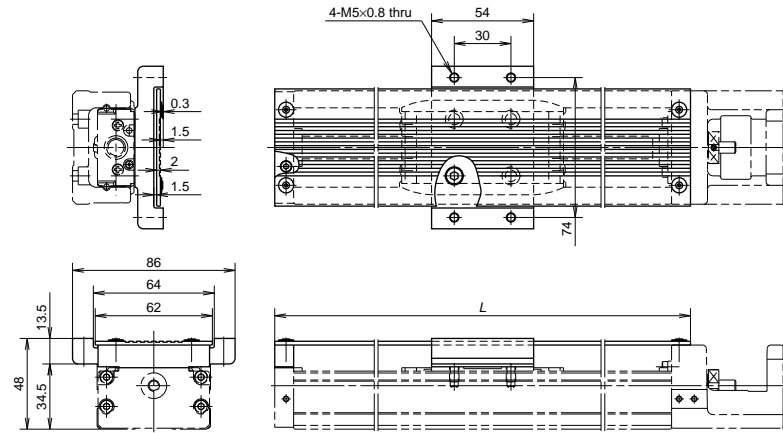
Table 4

Nominal size	Body length L_2 (mm)	Reference number	Sensor rail reference number
MCH06	150	MCH06005H05K MCH06005H10K MCH06005H20K	MC-SRL-0150
	200	MCH06010H05K MCH06010H10K MCH06010H20K	MC-SRL-0200
	300	MCH06020H05K MCH06020H10K MCH06020H20K	MC-SRL-0300
	400	MCH06030H05K MCH06030H10K MCH06030H20K MCH06020H05D MCH06020H10D MCH06020H10D	MC-SRL-0400
	500	MCH06040H05K MCH06040H10K MCH06040H20K MCH06030H05D MCH06030H10D	MC-SRL-0500
	600	MCH06050H05K MCH06050H10K MCH06050H20K MCH06040H10K MCH06040H20D	MC-SRL-0600
MCH06	150	MCL06005H05K MCL06005H10K	MC-SRL-0150
	200	MCL06010H05K MCL06010H10K	MC-SRL-0200
	300	MCL06020H05K MCL06020H10K	MC-SRL-0300
	400	MCL06030H10K MCL06030H20K	MC-SRL-0400
	500	MCL06040H10K MCL06040H20K	MC-SRL-0500
	600	MCL06050H10K MCL06050H20K	MC-SRL-0600
MCH09	240	MCH09010H05K MCH09010H10K MCH09010H20K	MC-SRL-0240
	340	MCH09020H05K MCH09020H10K MCH09020H20K	MC-SRL-0340
	440	MCH09030H05K MCH09030H10K MCH09030H20K MCH09015H05D MCH09015H10D	MC-SRL-0440
	540	MCH09040H05K MCH09040H10K MCH09040H20K MCH09025H05D MCH09025H10D	MC-SRL-0540
	640	MCH09050H05K MCH09050H10K MCH09050H20K MCH09035H05D MCH09035H10D	MC-SRL-0640
	740	MCH09060H05K MCH09060H10K MCH09060H20K MCH09045H10D MCH09045H20D	MC-SRL-0740

Nominal size	Body length L_2 (mm)	Reference number	Sensor rail reference number
MCH09	840	MCH09080H05K MCH09080H10K MCH09080H20K	MC-SRL-0840
	940	MCH09080H05K MCH09080H10K MCH09080H20K MCH09065H10D MCH09065H20D	MC-SRL-0940
	280	MCH10010H10K MCH10010H20K	MC-SRL-0280
MCH10	380	MCH10020H10K MCH10020H20K	MC-SRL-0380
	480	MCH10030H10K MCH10030H20K	MC-SRL-0480
	580	MCH10040H10K MCH10025H10D	MC-SRL-0580
	680	MCH10050H10K MCH10050H20K MCH10035H10D MCH10035H20D	MC-SRL-0680
	780	MCH10060H10K MCH10060H20K MCH10045H10D MCH10045H20D	MC-SRL-0780
	880	MCH10070H10K MCH10070H20K MCH10055H10D MCH10055H20D	MC-SRL-0880
	980	MCH10080H10K MCH10080H20K MCH10065H10D MCH10065H20D	MC-SRL-0980
	1080	MCH10090H10K MCH10090H20K MCH10075H20D	MC-SRL-1080
	1180	MCH10100H10K MCH10100H20K MCH10085H20D	MC-SRL-1180
	1280	MCH10110H10K MCH10110H20K MCH10095H20K	MC-SRL-1280
	1380	MCH10120H10K MCH10120H20K MCH10105H20D	MC-SRL-1380

C-3-3. 2 Cover Unit

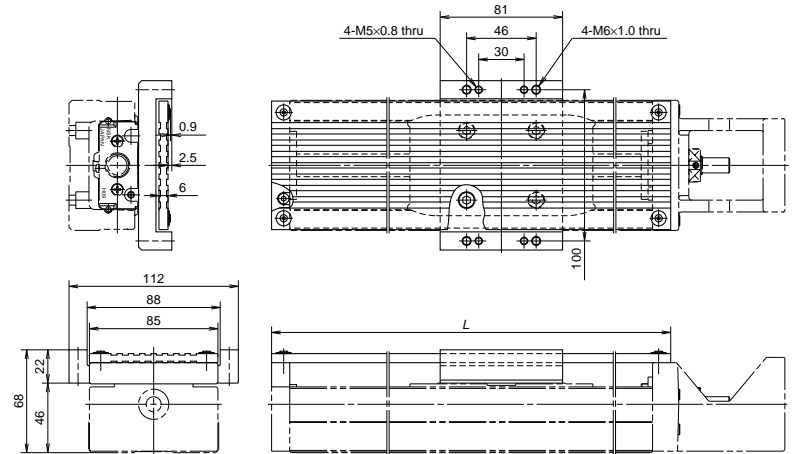
Cover unit for MCH06
Cover unit for MCL06



(Unit: mm)

Single slider		Double slider		Top cover length L
Stroke	Reference number	Stroke	Reference number	
50	MC-HV06005-00	-	-	170
100	MC-HV06010-00	-	-	220
200	MC-HV06020-00	100	MC-HV06010D00	320
300	MC-HV06030-00	200	MC-HV06020D00	420
400	MC-HV06040-00	300	MC-HV06030D00	520
500	MC-HV06050-00	400	MC-HV06040D00	620

Cover unit for MCH09

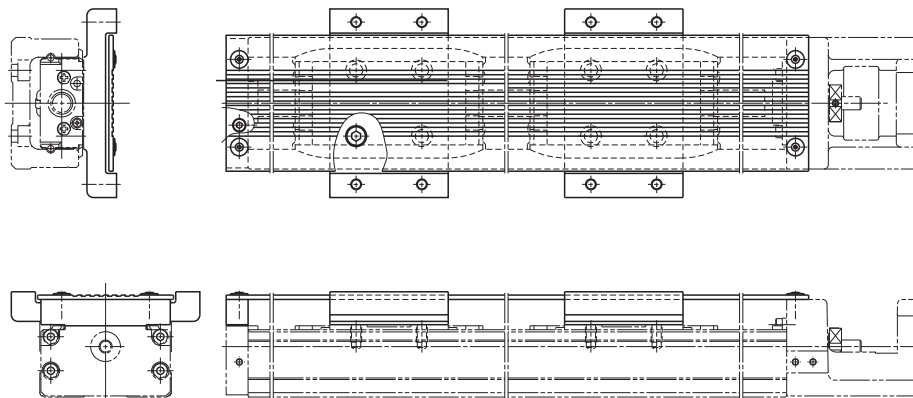


(Unit: mm)

Single slider		Double slider		Top cover length L
Stroke	Reference number	Stroke	Reference number	
100	MC-HV09010-00	-	-	264
200	MC-HV09020-00	-	-	364
300	MC-HV09030-00	150	MC-HV09015D00	464
400	MC-HV09040-00	250	MC-HV09025D00	564
500	MC-HV09050-00	350	MC-HV09035D00	664
600	MC-HV09060-00	450	MC-HV09045D00	764
700	MC-HV09070-00	-	-	864
800	MC-HV09080-00	650	MC-HV09065D00	964

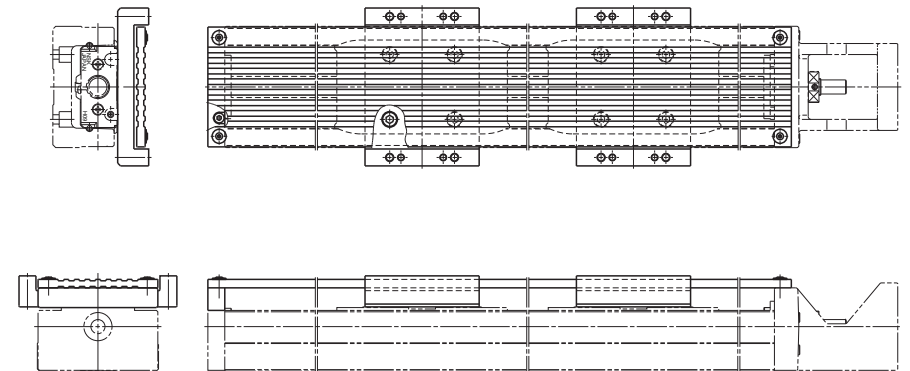
● Cover unit for double sliders (reference drawing)

Two spacers are attached for the double slider.



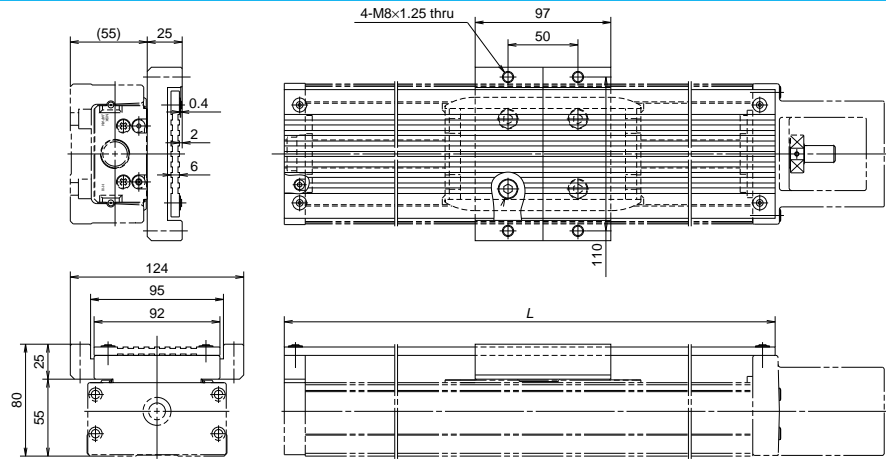
● Cover unit for double sliders (reference drawing)

Two spacers are attached for the double slider.





Cover unit for MCH10

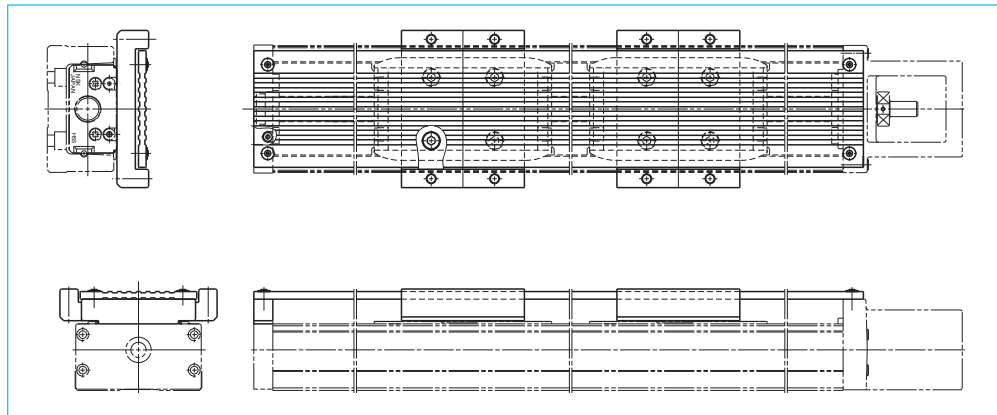


(Unit: mm)

Single slider		Double slider		Top cover length L
Stroke	Reference number	Stroke	Reference number	
100	MC-HV10010-00	-	-	310
200	MC-HV10020-00	-	-	410
300	MC-HV10030-00	-	-	510
400	MC-HV10040-00	250	MC-HV10025D00	610
500	MC-HV10050-00	350	MC-HV10035D00	710
600	MC-HV10060-00	450	MC-HV10045D00	810
700	MC-HV10070-00	550	MC-HV10055D00	910
800	MC-HV10080-00	650	MC-HV10065D00	1010
900	MC-HV10090-00	750	MC-HV10075D00	1110
1000	MC-HV10100-00	850	MC-HV10085D00	1210
1100	MC-HV10110-00	950	MC-HV10095D00	1310
1200	MC-HV10120-00	1050	MC-HV10105D00	1410

●Cover unit for double sliders (reference drawing)

Two spacers are attached for the double slider.



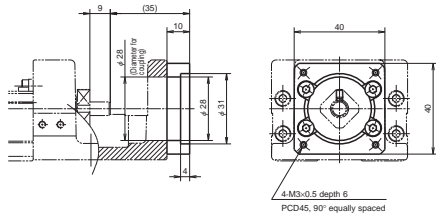
C-3-3. 3 Intermediate Plate for Motor

- Please ask NSK for a motor that is not listed in the compatible motor list.
- In case of motor indirect mount, please consult with NSK. ● Be sure to align the center lines when installing the motor.
- Motor models are subject to change at the motor manufacturers. For details, please contact the manufacture.

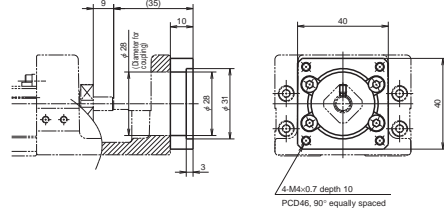
Motor Bracket for MCH06 and MCL06



Reference number : MC-BKH06-145-00



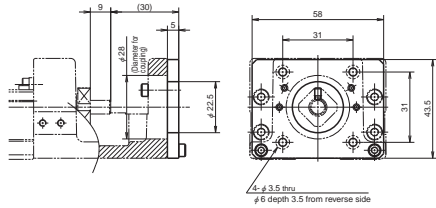
Reference number : MC-BKH06-146-00



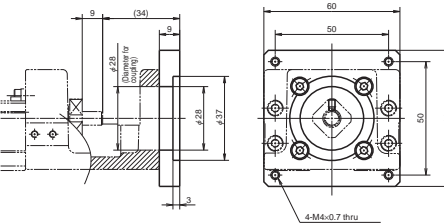
Compatible motor	
Maker	Motor models
Yaskawa Electric Corp.	SGMAH-A3(30W), SGMJV-A5A(50W), SGMVA-A5A(50W) SGMJV-01A(100W), SGMVA-01A(100W)
Mitsubishi Electric Corp.	HF-KP053(50W), HF-MP053(50W), HC-KFS053(50W) HC-MFS053(50W), HF-KP13(100W), HF-MP13(100W) HC-KFS13(100W), HC-MFS13(100W)
OMRON Corp.	R88M-W03(30W), R88M-W05(50W), R88M-W10(100W)
Sanyo Denki Co., Ltd.	P30B04xxx P Series

Compatible motor	
Maker	Motor models
Matsushita Electric Industrial Co., Ltd.	MSMD5A(50W), MSMD01(100W)

Reference number : MC-BKH06-231-00



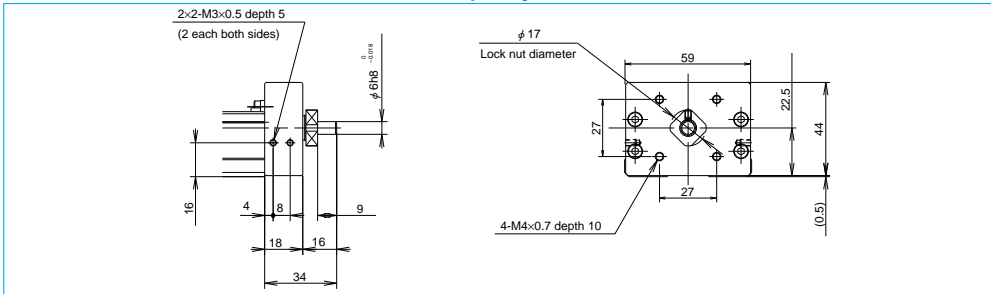
Reference number : MC-BKH06-250-00



Compatible motor	
Maker	Motor models
Oriental Motor Co., Ltd.	AS66, ASC66, UPK56x, UFK56x, PK56x, CSK56x, CFK56x MUMS02(200W), MUMS04(400W)
Sanyo Denki Co., Ltd.	PBM603xx, PBM604xx, 103F78xx

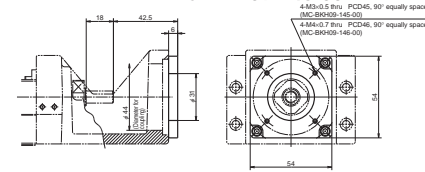
Compatible motor	
Maker	Motor models
Oriental Motor Co., Ltd.	AS46, ASC46, UPK54x, PK54x, CSK54x, CFK54x, UMK24x, CSK24x, PK24x
Sanyo Denki Co., Ltd.	PBM423xxx, 103F55xx

Diameter of ball screw shaft end to install a pulley for indirect motor mount of MCH06



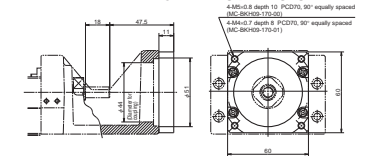
Motor Bracket for MCH09

Reference number : MC-BKH09-145-00
MC-BKH09-146-00



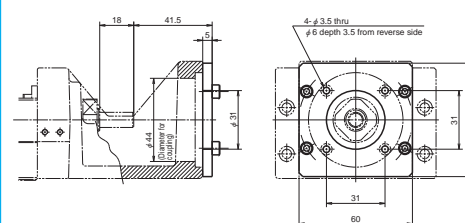
Reference number	Compatible motor	
	Maker	Motor models
MC-BKH09-145-00	Matsushita Electric Industrial Co., Ltd.	MSMD5A(50W), MSMD01(100W)
MC-BKH09-146-00	Yaskawa Electric Corp.	SGMJV-A5A(50W), SGMVA-A5A(50W) SGMJV-01A(100W), SGMVA-01A(100W)
	Mitsubishi Electric Corp.	HF-KP053(50W), HF-MP053(50W), HC-KFS053(50W) HC-MFS053(50W), HF-KP13(100W), HF-MP13(100W) HC-KFS13(100W), HC-MFS13(100W)
MC-BKH09-170-00	OMRON Corp.	R88M-W03(30W), R88M-W05(50W), R88M-W10(100W)
	Sanyo Denki Co., Ltd.	P30B04xxx P Series

Reference number : MC-BKH09-170-00
MC-BKH09-170-01



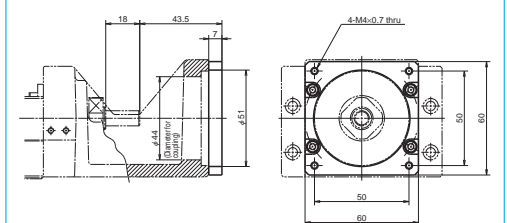
Reference number	Compatible motor	
	Maker	Motor models
MC-BKH09-170-00	Yaskawa Electric Corp.	SGMJV-02A(200W), SGMVA-02A(200W) SGMJV-04A(400W), SGMVA-04A(400W)
	Mitsubishi Electric Corp.	HF-KP23(200W), HF-MP23(200W), HF-KP43(400W) HF-MP43(400W), HC-KFS23(200W), HC-MFS23(200W) HC-KFS43(400W), HC-MFS43(400W)
MC-BKH09-170-01	OMRON Corp.	R88M-W20(200W), R88M-W40(400W)
	Sanyo Denki Co., Ltd.	P30B06xxx P Series
MC-BKH09-170-01	Matsushita Electric Industrial Co., Ltd.	MSMD02(200W), MSMA02(200W) MSMA04(400W), MSMD04(400W)

Reference number : MC-BKH09-231-00



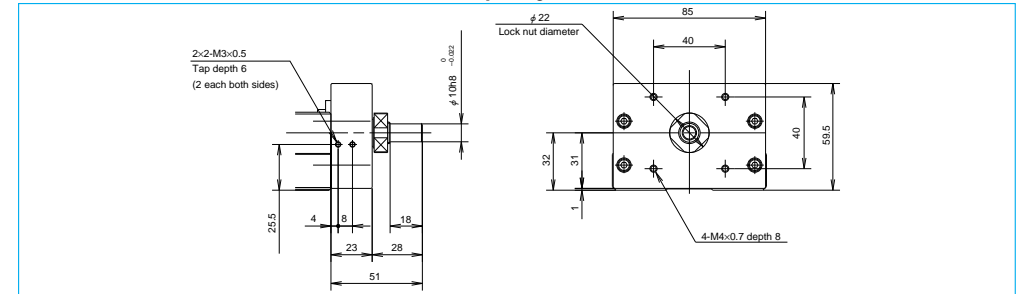
Compatible motor	
Maker	Motor models
Sanyo Denki Co., Ltd.	PBM423xxx, 103F55xx
Oriental Motor Co., Ltd.	AS46, ASC46, UPK54x, PK54x, CSK54x, CFK54x UMK24x, CSK24x, PK24x

Reference number : MC-BKH09-250-00



Compatible motor	
Maker	Motor models
Sanyo Denki Co., Ltd.	PBM603xx, PBM604xx, 103F78xx
Oriental Motor Co., Ltd.	AS66, ASC66, UPK56x, UFK56x, PK56x CSK56x, CFK56x

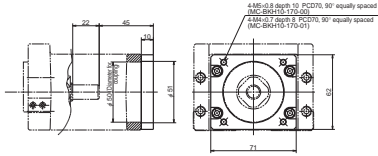
Diameter of ball screw shaft end to install a pulley for indirect motor mount of MCH09



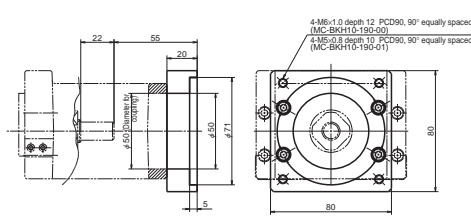


Motor Bracket for MCH10

Reference number : MC-BKH10-170-00
MC-BKH10-170-01



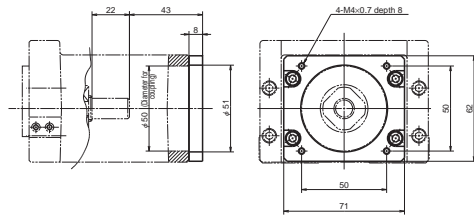
Reference number : MC-BKH10-190-00
MC-BKH10-190-01



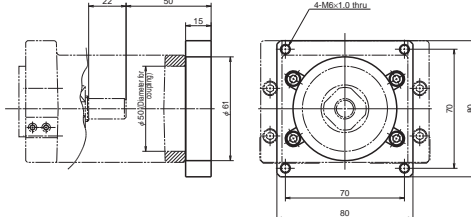
Reference number	Compatible motor	
	Maker	Motor models
MC-BKH10-170-00	Yaskawa Electric Corp.	SGMJV-02A(200W), SGMJV-02A(200W) SGMAV-04A(400W), SGMJV-04A(400W)
	Mitsubishi Electric Corp.	HF-KP23(200W), HF-MP23(200W), HF-KP43(400W) HF-MP43(400W), HC-KFS23(200W), HC-MFS23(200W) HC-KFS43(400W), HC-MFS43(400W)
	OMRON Corp.	R88M-W20(200W), R88M-W40(400W)
	Sanyo Denki Co., Ltd.	P30B06xxx P Series
MC-BKH10-170-01	Matsushita Electric Industrial Co., Ltd.	MSMD02(200W), MSMA02(200W) MSMD04(400W), MSMA04(400W)

Reference number	Compatible motor	
	Maker	Motor models
MC-BKH10-190-00	Mitsubishi Electric Corp.	HC-KFS73(750W), HC-MFS73(750W) HF-KP73(750W), HF-MP73(750W)
MC-BKH10-190-01	Sanyo Denki Co., Ltd.	P50B07xxx P Series

Reference number : MC-BKH10-250-00



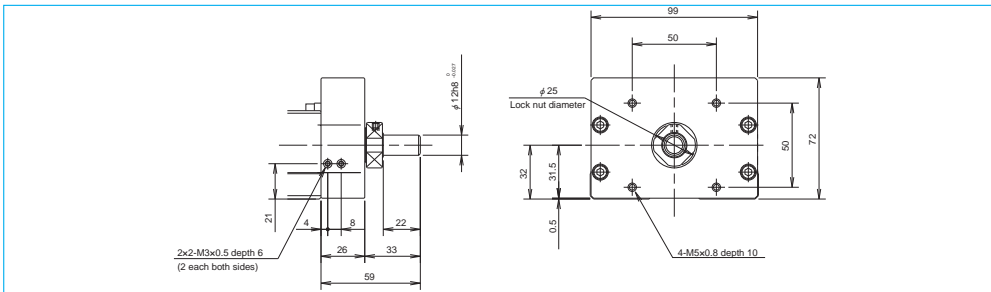
Reference number : MC-BKH10-270-00



Compatible motor	
Maker	Motor models
Sanyo Denki Co., Ltd.	PBM603xx, PBM604xx, 103F78xx
Oriental Motor Co., Ltd.	AS66, ASC66, UPK56x, PK56x, CSK56x, CFK56x UMK56x, UFK56x

Compatible motor	
Maker	Motor models
Oriental Motor Co., Ltd.	AS98, ASC98, UPK59x, PK59x, CSK59x, CFK59x UMK59x, UFK59x

Diameter of ball screw shaft end to install a pulley for indirect motor mount of MCH10



Availability Motor Table of Intermediate Plate for MCH Series
Table 5

Nominal size	Reference number code	Motor bracket reference number	Motor manufacturer	Stepping motor model number	Wattage of AC servo motor						
					30	50	100	200	400	750	
MCH06 MCL06	1	MC-BKH06-145-00	Matsushita Electric Industrial Co., Ltd.			MSMD5A	MSMD01				
			Yaskawa Electric Corp.		SGMAH-A3	SGMJV-A5A SGMAV-A5A	SGMJV-01A SGMAV-01A				
			Mitsubishi Electric Corp.			HF-KP053 HF-MP053 HC-KFS053 HC-MFS053	HF-KP13 HF-MP13 HC-KFS13 HC-MFS13				
			OMRON Corp. Sanyo Denki Co., Ltd.		R88M-W03	R88M-W05	R88M-W10				
MCH06 MCL06	2	MC-BKH06-146-00	Sanyo Denki Co., Ltd.	P30B04xxx (P Series)							
			Sanyo Denki Co., Ltd.		PBM423xxx 103F55xx						
			Oriental Motor Co., Ltd.		AS46, ASC46 UPK54x, PK54x CSK54x, CFK54x UMK24x, CSK24x PK24x						
			Sanyo Denki Co., Ltd. Oriental Motor Co., Ltd.		PBM603xx PBM604xx 103F78xx					MUMS02	MUMS04
MCH06 MCL06	3	MC-BKH06-231-00	Oriental Motor Co., Ltd.								
			Sanyo Denki Co., Ltd.		P30B04xxx (P Series)						
			Oriental Motor Co., Ltd.		AS66, ASC66 UPK56x, UFK56x PK56x, CSK56x CFK56x						
			Sanyo Denki Co., Ltd.		P50B07xxx (P Series)						
MCH09	1	MC-BKH09-145-00	Matsushita Electric Industrial Co., Ltd.			MSMD5A	MSMD01				
			Yaskawa Electric Corp.		SGMJV-A5A SGMAV-A5A	SGMJV-01A SGMAV-01A					
			Mitsubishi Electric Corp.		HF-KP053 HF-MP053 HC-KFS053 HC-MFS053	HF-KP13 HF-MP13 HC-KFS13 HC-MFS13					
			OMRON Corp. Sanyo Denki Co., Ltd.		R88M-W05	R88M-W10					
MCH09	2	MC-BKH09-146-00	Sanyo Denki Co., Ltd.	P30B04xxx (P Series)							
			Yaskawa Electric Corp.								
			Mitsubishi Electric Corp.								
			OMRON Corp. Sanyo Denki Co., Ltd.		R88M-W20	R88M-W40					
MCH09	3	MC-BKH09-170-00	Yaskawa Electric Corp.					SGMJV-02A SGMAV-02A	SGMJV-04A SGMAV-04A		
			Mitsubishi Electric Corp.				HF-KP23 HF-MP23 HC-KFS23 HC-MFS23	HF-KP43 HF-MP43 HC-KFS43 HC-MFS43			
			OMRON Corp. Sanyo Denki Co., Ltd.		P30B06xxx (P Series)				R88M-W20	R88M-W40	
			Matsushita Electric Industrial Co., Ltd.						MSMD02 MSMA02	MSMD04 MSMA04	
MCH09	4	MC-BKH09-170-01	Sanyo Denki Co., Ltd.								
			Sanyo Denki Co., Ltd.		PBM423xxx 103F55xx						
			Oriental Motor Co., Ltd.		AS46, ASC46 UPK54x, PK54x CSK54x, CFK54x UMK24x, CSK24x PK24x						
			Sanyo Denki Co., Ltd. Oriental Motor Co., Ltd.		PBM603xx PBM604xx 103F78xx						
MCH09	5	MC-BKH09-231-00	Oriental Motor Co., Ltd.								
			Sanyo Denki Co., Ltd.		P30B06xxx (P Series)						
			Oriental Motor Co., Ltd.		AS66, ASC66 UPK56x, UFK56x PK56x, CSK56x CFK56x						
			Sanyo Denki Co., Ltd.		P50B07xxx (P Series)						
MCH10	1	MC-BKH10-170-00	Yaskawa Electric Corp.					SGMJV-02A SGMAV-02A	SGMJV-04A SGMAV-04A		
			Mitsubishi Electric Corp.				HF-KP23 HF-MP23 HC-KFS23 HC-MFS23	HF-KP43 HF-MP43 HC-KFS43 HC-MFS43			
			OMRON Corp. Sanyo Denki Co., Ltd.		P30B06xxx (P Series)				R88M-W20	R88M-W40	
			Matsushita Electric Industrial Co., Ltd.						MSMD02 MSMA02	MSMD04 MSMA04	
MCH10	2	MC-BKH10-170-01	Sanyo Denki Co., Ltd.								
			Sanyo Denki Co., Ltd.		PBM423xxx 103F55xx						
			Oriental Motor Co., Ltd.		AS46, ASC46 UPK54x, PK54x CSK54x, CFK54x UMK24x, CSK24x PK24x						
			Sanyo Denki Co., Ltd. Oriental Motor Co., Ltd.		PBM603xx PBM604xx 103F78xx						
MCH10	3	MC-BKH10-190-00	Mitsubishi Electric Corp.								
			Sanyo Denki Co., Ltd.		P50B07xxx (P Series)						
			Oriental Motor Co., Ltd.		AS66, ASC66 UPK56x, PK56x CSK56x, CFK56x UMK56x, UFK56x						
			Sanyo Denki Co., Ltd.		P50B07xxx (P Series)						
MCH10	4	MC-BKH10-190-01	Sanyo Denki Co., Ltd.								
			Sanyo Denki Co., Ltd.		PBM603xx PBM604xx 103F78xx						
			Oriental Motor Co., Ltd.		AS66, ASC66 UPK56x, PK56x CSK56x, CFK56x UMK56x, UFK56x						
			Oriental Motor Co., Ltd.		AS98, ASC98 UPK59x, PK59x CSK59x, CFK59x UMK59x, UFK59x						
MCH10	5	MC-BKH10-250-00	Oriental Motor Co., Ltd.								
			Oriental Motor Co., Ltd.		P50B07xxx (P Series)						
			Oriental Motor Co., Ltd.		AS98, ASC98 UPK59x, PK59x CSK59x, CFK59x UMK59x, UFK59x						
			Oriental Motor Co., Ltd.		AS98, ASC98 UPK59x, PK59x CSK59x, CFK59x UMK59x, UFK59x						
MCH10	6	MC-BKH10-270-00	Oriental Motor Co., Ltd.								
			Oriental Motor Co., Ltd.		P50B07xxx (P Series)						
			Oriental Motor Co., Ltd.		AS98, ASC98 UPK59x, PK59x CSK59x, CFK59x UMK59x, UFK59x						
			Oriental Motor Co., Ltd.		AS98, ASC98 UPK59x, PK59x CSK59x, CFK59x UMK59x, UFK59x						

C80